

# Complete solutions for all your print production needs

Discover our range of large-format inkjet printers complete with matching inks and software. Rest assured of high productivity and outstanding print quality at the best cost of ownership, as well as impeccable service and support across the globe.

THINK **INKJET**  
THINK **AGFA** 

# Onset X HS series

322 x 160 cm, up to 1450 m<sup>2</sup>/h



The Onset X HS series is made up of three high-speed flatbed inkjet printing presses with a print size up to 322 x 160 cm that let you increase productivity and optimize the job changeover process, while maintaining the highest reliability, consistency and print quality. The single-platform, scalable architecture can be configured to obtain the speed you need to produce the widest spectrum of graphics on a wide range of materials. Onset X HS is ideal for companies producing a mix of fast-turnaround retail graphics, high-quality images for close-up viewing and direct-to-board corrugated display and packaging.



## Onset X1 HS

With a maximum throughput of up to 600 m<sup>2</sup>/h\*, and high-quality print modes, the X1 HS is ideal for lower volume, dedicated flatbed applications.

## Onset X2 HS

Onset X2 HS enables printing of up to 835 m<sup>2</sup>/h\*, with superb print quality.

## Onset X3 HS

When fast gets even faster... The Onset X3 HS enables single-cycle printing, pushing productivity up to 1450 m<sup>2</sup>/h\*, and has features on board that enable fast 30-second job turnaround.

\* Based on an approximate 4.4 second material handling time.

### Working with a smaller budget?

The original non-HS Onset X machines X1, X2 and X3 are still available.

### Key benefits

- One platform, infinite potential: upgrades can be carried out on-site in just a few days
- Multiple automation options: robotic technology offers solutions for different production and material handling requirements
- 30-second setup: automated robot effectors and side shutters adjust automatically according to substrate setup
- A twenty-five zone vacuum table coupled with an auto-sliding skin significantly reduces the need for manual masking
- Exceptional drop placement accuracy
- High-quality Agfa inks suited to different applications and materials
- Compatible with Asanti workflow & color management software
- Complemented with IncaConnect, a suite of software tools for workflow integration

# Jeti LED series

## Jeti Mira MG2716/2732 LED

270 x 160 or 320 cm, 248 m<sup>2</sup>/h

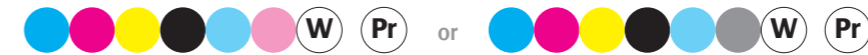


This award-winning true flatbed system based on UV LED inkjet technology offers impressive print quality across a wide variety of materials at high production speeds. Available in two sizes, with a width of 2.69 m and a worktop depth of 1.6 m or 3.2 m, it achieves throughputs of up to 248 m<sup>2</sup>/h. The optional roll-to-roll unit lets you print on flexible media up to 2.05 m wide. Further options include varnish or primer print heads.



## Jeti Tauro H2500 LED

254 cm, 390 m<sup>2</sup>/h



A robust hybrid UV inkjet printer, the Jeti Tauro H2500 LED features continuous and automated feeding of rigid and flexible media. It handles countless applications with outstanding print quality in two different six-color modes, plus white or white and primer. Gloss and satin are available for enhanced spot color reproduction without loss of image quality or extra ink usage.

The Jeti Tauro H2500 comes standard with a built-in light roll-to-roll for occasional, single-roll printing. The master roll-to-roll option is ideal for long-run roll-to-roll jobs. The printer can also be used for roll-to-sheet – enabling fast throughput and minimal material waste.



## Jeti Tauro H3300 LED series

330 cm, 905 m<sup>2</sup>/h



Agfa's UV LED flagship hybrid presses offer 24/7 productivity and award-winning quality on a wide range of rigid and flexible materials with the lowest ink consumption. It's the perfect solution for larger print service providers.

All Jeti Tauro H3300 LED models can be enhanced with semi-automatic or full-automatic loading and unloading of rigid media. Furthermore, they can be fitted with a Master Roll-to-Roll system for jumbo rolls of up to 700 kg per roll in both single- and dual-roll mode, a Flex Roll-to-Roll system that enables a fast changeover between rigid and flexible media and can handle one or two rolls up to 450 kg, or a Light Roll-to-Roll for single rolls up to 200 kg. The optional camera guarantees accurate double-sided printing.



## Tauro H3300 family

Tauro H3300 S LED	Tauro H3300 HS LED	Tauro H3300 LED	Tauro H3300 UHS LED
<p>'Standard' model, upgradeable as workloads increase</p> <ul style="list-style-type: none"> <li>• Up to 450 m<sup>2</sup>/h, but can be upgraded to the speed of the HS</li> <li>• 6 colors</li> <li>• Optional white, or white and primer</li> </ul>	<p>High speed upgrade of the standard model</p> <ul style="list-style-type: none"> <li>• Up to 680 m<sup>2</sup>/h</li> <li>• 6 colors</li> <li>• Varnish (flood or spot)</li> <li>• Optional white, or white and primer</li> </ul>	<p>The original model</p> <ul style="list-style-type: none"> <li>• Up to 680 m<sup>2</sup>/h</li> <li>• 4-color version for top-productivity (sellable production quality in 2 or 3 passes)</li> <li>• 6-color version for highest print quality</li> <li>• Optional white, or white and primer</li> </ul>	<p>Ultra-high-speed top model, fit for the highest workloads</p> <ul style="list-style-type: none"> <li>• Up to 905 m<sup>2</sup>/h</li> <li>• 4-color version for top-productivity (sellable production quality in 2 or 3 passes)</li> <li>• 6-color version for highest print quality</li> <li>• Varnish (flood or spot)</li> <li>• Optional white, or white and primer</li> <li>• Advanced automation</li> <li>• Extended vacuum for cardboard printing</li> </ul>

### Key benefits

- Hybrid solution: prints flawlessly on both rigid and flexible media
- Heavy-duty: built for 24/7 printing
- Impressive productivity and multiple automation options
- Award-winning image quality in four or six colors plus white, white or primer, or varnish
- UV LED technology for economical and ecological benefits
- GREENGUARD Gold certified Agfa inks for the highest quality & safety and the lowest ink consumption
- Powered by Asanti workflow software, featuring smart dashboards

# Anapurna LED series

The Anapurna LED series for wide-format printing is the perfect solution for visual communication specialists, digital printers, photo labs and medium-sized screen printing companies that are looking to print on rigid and flexible materials up to 3.2 m wide. UV LED curing allows to print on a wide range of media, while saving energy, costs and time. White ink comes in handy for spot color or elevated printing, or to print on transparent materials for back-lit applications.

## Anapurna H1650i LED

165 cm, 63 m<sup>2</sup>/h



## Anapurna RTR3200i LED

320 cm, 127 m<sup>2</sup>/h



### Key benefits

- High-quality, high-productivity printing on a wide range of rigid and flexible media
- UV LED lamps enable printing on sensitive materials — saving costs, time and the environment
- Agfa-made UV LED inks for fast drying, material versatility and a very wide color gamut
- Printing pre-, sandwich and post-white in one run
- GREENGUARD Gold certified Agfa inks for the highest quality & safety and the lowest ink consumption
- Powered by Asanti workflow software

# Oberon RTR3300

330 cm, 224 m<sup>2</sup>/h



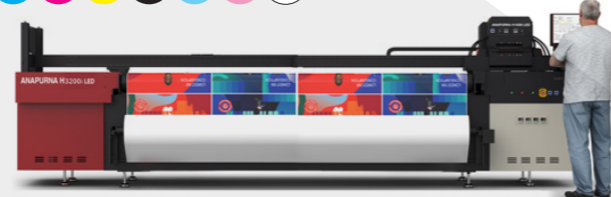
### Key benefits

- Extremely wide media and applications scope
- Dual-roll printing option for increased flexibility
- Liner-free mesh printing
- Outstanding ease of use

The Anapurna LED series guarantees a large color gamut, reproduction of small text up to 4 point, excellent tonal rendering and a low ink consumption. The roll-to-roll system is built to ensure perfect tensioning of the material without skewing or wrinkling. Ionizing bars mounted on the print carriage remove electrostatic charges from the substrate, ensuring optimal positioning of ink drops.

## Anapurna H2050i LED/H2500i LED /H3200i LED

205 cm, 104 m<sup>2</sup>/h / 250 cm, 115 m<sup>2</sup>/h / 320 cm, 129 m<sup>2</sup>/h



## Anapurna FB2540i LED

254 x 154 cm, 96 m<sup>2</sup>/h



The Oberon RTR3300 is a dedicated 3.3 m high-end roll-to-roll machine that combines excellent print quality and high throughput with a unique ease of use. Featuring UV LED curing and a water-cooled print plate that keeps the printing zone at room temperature, the Oberon RTR3300 is capable of printing on a wide range of flexible materials — even the most heat-sensitive ones such as self-adhesive vinyl, static cling or backlit film. It also handles mesh without liner.

The dual-roll option enables more efficient printing on two rolls of smaller media, up to 1.6 m wide. Media use is super-efficient thanks to a number of smart features: a free fall option, a double safety light curtain and a light box that helps you check the quality of backlit prints right away. Agfa's UV LED inks excel in smooth tonal rendering and razor-sharp texts.

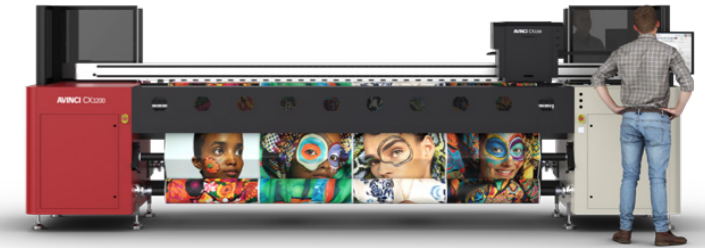
- GREENGUARD Gold certified Agfa inks for the highest quality & safety and the lowest ink consumption
- Driven by Agfa's Asanti workflow

# Avinci CX3200 textile printer

320 cm, 250 m<sup>2</sup>/h



This 3.2 m dye-sublimation printer produces soft signage and interior décor with deep rich blacks and vibrant colors at a max speed of 250 m<sup>2</sup>/h. Printing directly onto a wide range of polyester fabrics, it is ideally suited for producing banner displays, flags, wall graphics, POS, or tradeshow displays. As it also prints on transfer paper, the Avinci lets PSPs expand their application scope and obtain superb sharp prints, while eliminating set-off and minimizing media waste. The printer sports unique features that enhance single-operator ease of use, efficient media handling, and fast changeovers. The Avinci CX3200 uses an off-line calendaring unit to ensure perfect fixation.



### Key benefits

- Dedicated dye sublimation soft signage printer
- Direct to textile or with transfer paper
- Excellent print quality and fine detail rendering
- High productivity and a robust design for reliable printing at all times
- Convenient operations and a fast changeover between jobs
- Dedicated Agfa inks with low consumption
- Powered by Agfa's Asanti workflow software

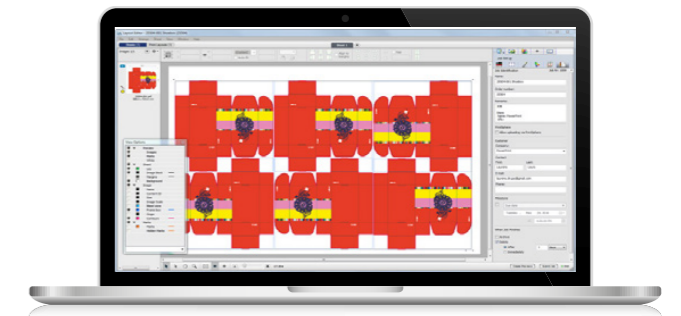
# Asanti

Asanti is a complete, automated Sign & Display production hub featuring Agfa's award-winning color management technology, powered by the latest version of **Adobe PDF Print Engine (APPE)**. It boasts fast, automatic PDF pre-flighting and advanced functionalities (e.g. nesting and tiling) for various applications.

Streamline your workflow with Asanti and you'll minimize manual interventions, avoid errors, obtain better print quality, limit printer idle time, and reduce waste.

### Key benefits

- A single tool with an intuitive user interface to manage all your print data and devices
- Built-in color management for consistent color quality and reproduction with minimal effort
- Automatic pre-flighting, PDF checking and managing of your entire printing process
- Increased productivity combined with a reliable, predictable and high-quality output
- Integration with Asanti StoreFront web-to-print, PrintSphere data management and PrintTune standardization software
- Powered by the latest Adobe PDF Print Engine (APPE)



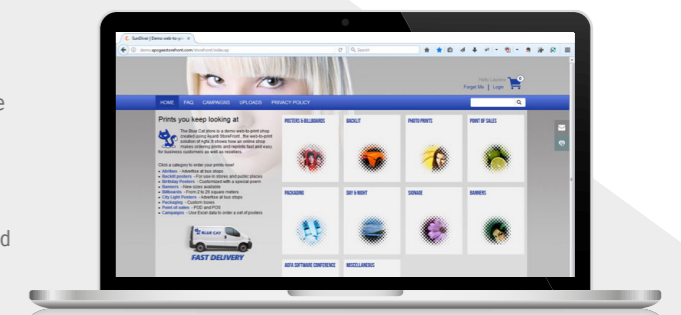
Asanti comes in three different subscription models (**Core/Advanced/Expert**), with a predictable flat fee, immediate access to all software updates, and guaranteed smooth operations at any time. Choose the appropriate plan according to your needs, and complement it with dedicated options.

# Asanti StoreFront

Stop creating the same type of quotes every day, or searching for the files that your customer uploaded somewhere. Asanti StoreFront is web-to-print software solution that streamlines order fulfillment and reduces costs. In an easy-to-use online store, your customers can place orders whenever they want.

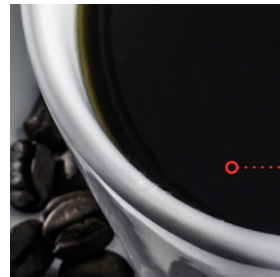
When used in conjunction with our Asanti workflow software, print jobs that have been exported to FTP or your network are automatically downloaded and queued for production. Prepress operators can still step & repeat POP orders, tile banners and add marks, if needed.

You don't need HTML know-how or scripting skills to set up stores. We'll take care of system maintenance and security while you focus on your core business.



# Best print quality

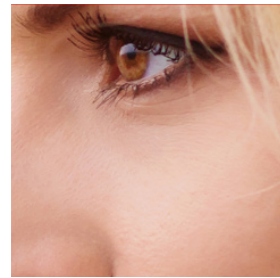
## Excellent rendering



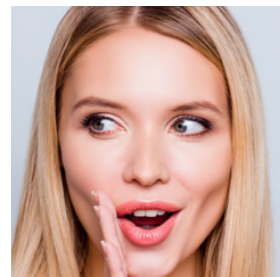
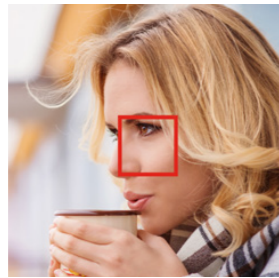
Details in shadows



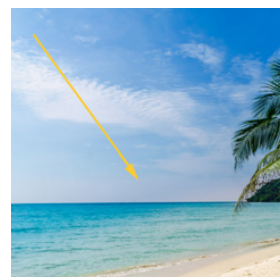
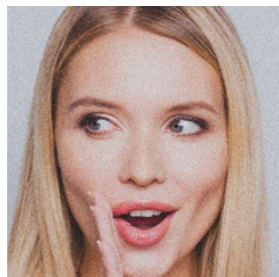
Details in highlights



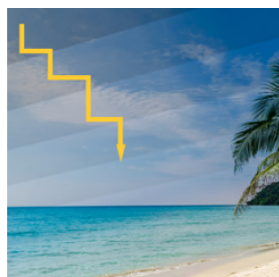
Smooth skin tone rendering



Low noise rendition



Smooth ramp-ups over tonal range



## True colors

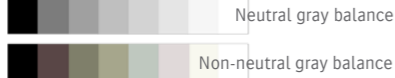
Large color gamut and accurate spot color mapping



Artefact-free solid color reproduction



Neutral gray balance



# Lowest ink consumption

Agfa's in-house developed inks enable you to print on a wide range of flexible and rigid materials for indoor and outdoor applications. They boast a wide color gamut and high color vibrancy, resulting in lively yet natural prints.

Thanks to Agfa's patented 'Thin Ink Layer' technology ink consumption per square foot is the lowest on the market. That means you can create eye-catching prints while saving on your budget.



Agfa inks obtained multiple certificates – including GREENGUARD Gold – and comply with a range of industry norms pertaining to product safety as well as chemical emissions and air quality.

## Tuned Agfa waveform

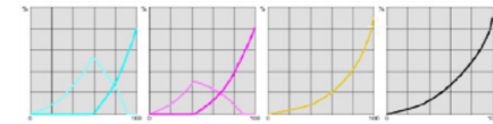
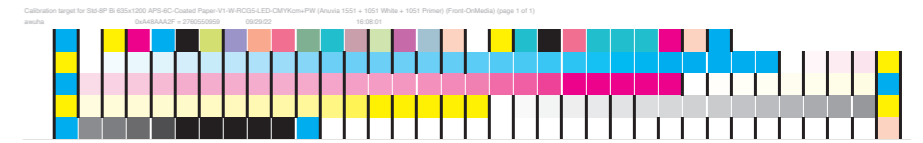
Optimal drop formation:

- minimal tail length
- outstanding dot positioning
- no mist/ink satellites



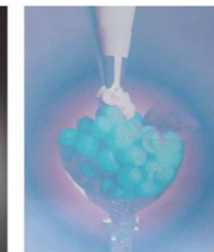
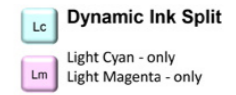
## Ink/Media profiles

Agfa's Calibrated Print Mode (CPM) enhances efficiency and productivity by bundling all relevant settings for a particular substrate, and making them available to operators with a single click in the Asanti workflow.



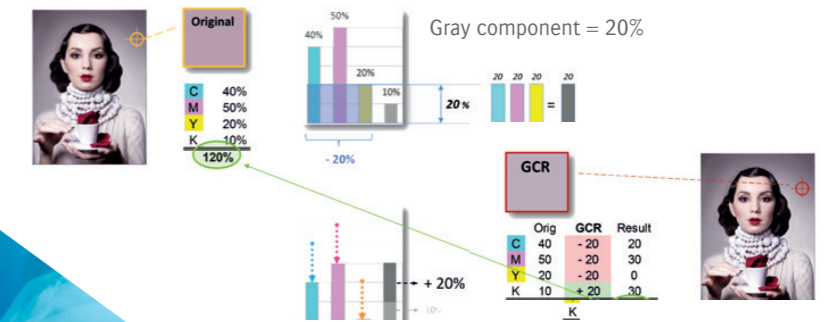
## Dynamic Ink Split (DIS)

Agfa's patented technology to make optimal usage of light colors (Lc-Lm-Lk) and reduce ink consumption



## Asanti InkSave GCR/UCR

Our ink saving software results in reduced ink usage without loss of quality.



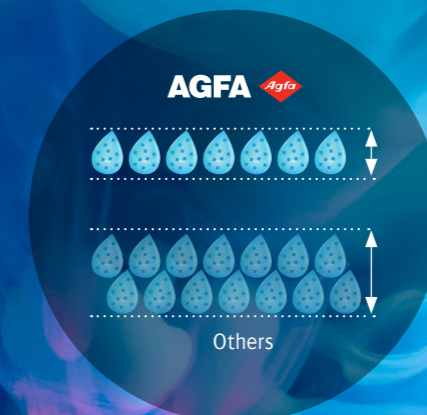
GCR subtracts gray component (20% CMY) from colors and adds to black

## Thin Ink Layer technology

The highest print quality at the lowest ink consumption

Thanks to:

- Highly efficient distribution of the pigments, resulting in exceptional color strength
- Smart use of ink limitations, GCR etc. in the Asanti software
- Limited, easy and fast printer maintenance



# Grow your business, not your footprint

At Agfa, we firmly believe that it is our duty to do business in a responsible, sustainable and transparent way. This belief has driven Agfa's long tradition of good corporate citizenship: striving for profitable growth, while making sure that our business strategy accounts for our broader impact on the environment and on society at large. We have prioritized our actions according to the Sustainable Development Goals defined by the United Nations, and have set concrete targets for select targets which we consider of the highest relevance.

## Our service, your profit

Even the most reliable printing systems need timely service to keep you up and running at all times. We have an expert service team of highly skilled engineers. The fact that they are based across the globe means limited travel time, and maximal production uptime for you. In addition, we use online monitoring and diagnostic tools, allowing for remote problem solving and interventions.

Of course, we want you to get the maximum out of your printing system. First of all, we support you onsite during start-up and the first production period. Once you are up and running, we offer both standard and customized, advanced training programs. Last but not least, your feedback is important to us: we want to be true partners who capture your experiences, needs and challenges and help you grow.

## Why Agfa

Today's printing professionals face tough challenges. How to stay on top of things when turnaround is faster than ever? What's the best way to manage increasingly complex workflows? How to control costs and safeguard profit margins? If questions like these sound familiar, you can rely on us to deploy our know-how and expertise to help you find the right answers and help you grow your business.

The Agfa Group is a leading company in imaging technology and IT solutions with over 150 years of experience. The Group holds three divisions, one of which is Digital Print & Chemicals, which has set it as its mission to empower graphic printing and goods-producing industries to be more versatile and (cost)efficient through innovative inkjet printing technology.

Every Agfa large-format system builds on decades of experience in designing, developing and manufacturing integrated inkjet printing systems. We know how all components interact. Our unique system approach aligns engine, inks, media, workflow and color management software to ensure the highest print quality and a consistent and reliable production process from start to finish.



More details on our website

© Copyright 2023 by Agfa N.V. All rights reserved. AGFA and the Agfa rhombus are trademarks of Agfa-Gevaert NV, Belgium or its affiliates. Anapurna, Avinci, Jeti, Oberon, Onset, Asanti, PrintSphere and PrintTune are trademarks of Agfa NV. All other brand and product names may be service marks, trademarks, or registered trademarks of their own respective owners. All product specifications are subject to change without notice. All information contained in this document is intended for guidance purposes only, and specifications are dependent on, but not limited to, substrate, operator, files and environmental conditions.

